

ALE 

SMARTER, SAFER, STRONGER


New Generation AL.SK cranes

SK Presentation


The world's highest-capacity land-based cranes
the AL.SK350 and AL.SK190

Capacity

- 1,000te @ 100 metres with 70 metres under hook



© 2015 ALE. All rights reserved. ALE is a registered trademark of ALE. ALE is a leader in the world of tower cranes.

ALE 

Static load test: 3680t testweight on 120mtr mainboom



© 2015 ALE. All rights reserved. ALE is a registered trademark of ALE. ALE is a leader in the world of tower cranes.

ALE 

Dynamic load test: 3350t on 120mtr mainboom



© 2015 ALE. All rights reserved. ALE is a registered trademark of ALE. ALE is a leader in the world of tower cranes.

ALE 



ALFA
www.alfacranes.com



SK350

- 5,000 tonnes lift capacity
- 354,000Tm load moment

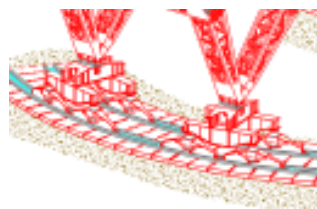
ALFA
www.alfacranes.com



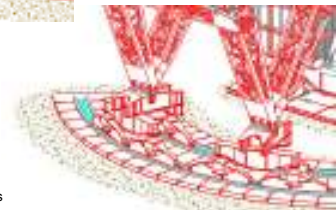
SK190

- 4,300 tonnes lift capacity
- 190,000Tm load moment

ALFA
www.alfacranes.com



SK350
with 8 skid-shoes



SK190
With 6 skid-shoes

ALFA
www.alfacranes.com



Baseframe SK190



www.alectra.com
www.alectra.com



Base and Skid Shoes



www.alectra.com
www.alectra.com



www.alectra.com
www.alectra.com



www.alectra.com
www.alectra.com



New Design Clamping System
Quick-clamping system, at any point on track



www.alc.com.au
1800 000 000
www.alc.com.au



www.alc.com.au
1800 000 000
www.alc.com.au



www.alc.com.au
1800 000 000
www.alc.com.au



Boom Assembly

Topping System



www.alc.com.au
1800 000 000
www.alc.com.au





ALC
www.alc.com



ALC
www.alc.com

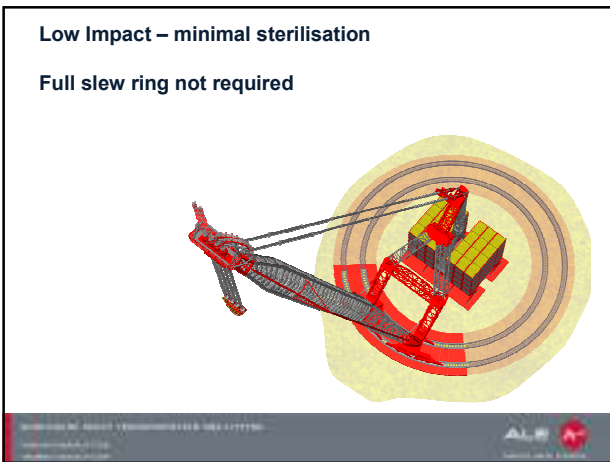


ALC
www.alc.com



ALC
www.alc.com



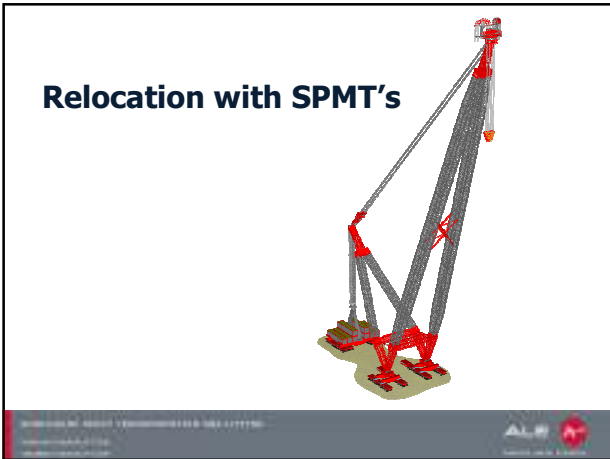




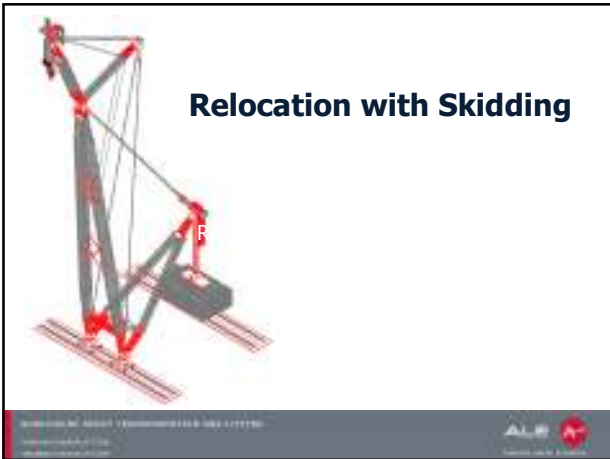
www.alp.it
www.alp.it
www.alp.it



www.alp.it
www.alp.it
www.alp.it



www.alp.it
www.alp.it
www.alp.it



www.alp.it
www.alp.it
www.alp.it



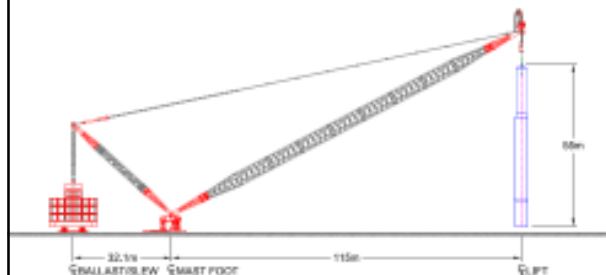
Erection of columns



www.alb.com
www.alb.com



Lifting at large Radius



www.alb.com
www.alb.com



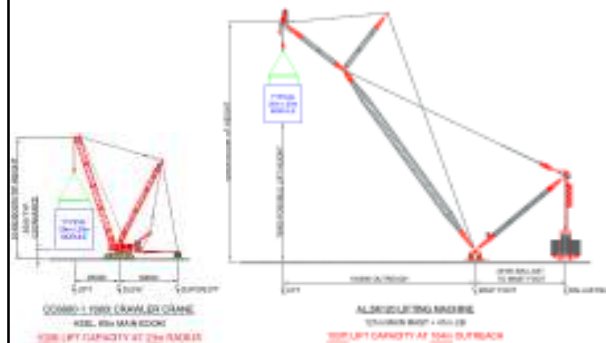
Module Assembly & Fabrication Yards



www.alb.com
www.alb.com



CC8800-1 v SK350



www.alb.com
www.alb.com



Kayan Project

Location : Jubail, Saudi Arabia

Scope of Work : Heavy Lifting

- Over 100 lifts
- AL.SK190 allowed engineers to complete foundations and pipe racks in advance of installation

www.alectrans.com
www.alectrans.com



Kayan Project

Lifting Depropaniser Column with AL.SK190

- Length 69m
- Weight 755Te
- Outreach 84m



www.alectrans.com
www.alectrans.com



Kayan Project

Lifting C3 Splitter Column with AL.SK190

- Length 71m
- Weight 805Te
- Outreach 74.5m



www.alectrans.com
www.alectrans.com



Lifting Job of the Year 2009



International Cranes' readership voted ALE the "clear winner" for the 2009 title for the SK190 lifting a 69 metre Depropaniser Column



www.alectrans.com
www.alectrans.com



Thai Growth Project

Location : Thailand
Scope of Work : Transportation, Heavy Lifting & Installation

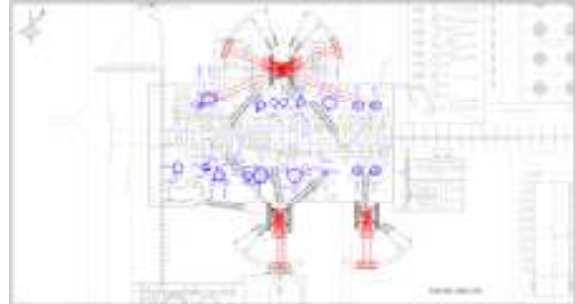
- Compact site
- Original 3 month lift schedule moves to 30 day window
- All columns were installed fully dressed despite weight increases of up to 25% from original weights

ALC
www.alc.com.au



Thai Growth Project, Thailand

CC8800 Plot Plan



ALC
www.alc.com.au



Thai Growth Project, Thailand

Original Scheme – North Side



ALC
www.alc.com.au



Thai Growth Project, Thailand

Lifting T4100

- Length 76.3m
- Weight 660.7t
- Outreach 38.5m



ALC
www.alc.com.au



Thai Growth Project, Thailand

Lifting T5500



ALB
www.alb.com.au
ALB
www.alb.com.au



Valero Port Arthur Coker & HCU

ALB
www.alb.com.au
ALB
www.alb.com.au



Valero Coker Changeout



ALB
www.alb.com.au
ALB
www.alb.com.au



Valero Coker Change-out



ALB
www.alb.com.au
ALB
www.alb.com.au



Valero Coker Change-out



ALBEMARLE CORPORATION
www.albemarle.com
© 2011 Albemarle Corporation



Valero Coker Change-out



ALBEMARLE CORPORATION
www.albemarle.com
© 2011 Albemarle Corporation



Valero HCU lifts



ALBEMARLE CORPORATION
www.albemarle.com
© 2011 Albemarle Corporation



Valero HCU lifts



ALBEMARLE CORPORATION
www.albemarle.com
© 2011 Albemarle Corporation



ANY QUESTIONS ?