



MOBILDEICH

Flooding protection and Construction-
Site drainage with Mobildeich
Dr.-Ing. Walter Wagenhuber





MOBILDEICH

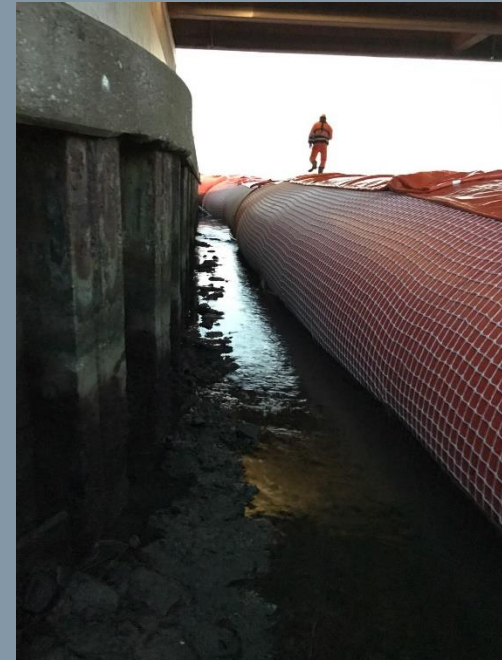
Mobiledyke Sizes

MD45-2

Hight : 40cm

Emptyweight : 120Kg/20m

Missionweight : 6,4to/20m



MD350-2

Hight : ca.300cm

Emptyweight : 1500Kg/20m

Missionweight : 380to/20m



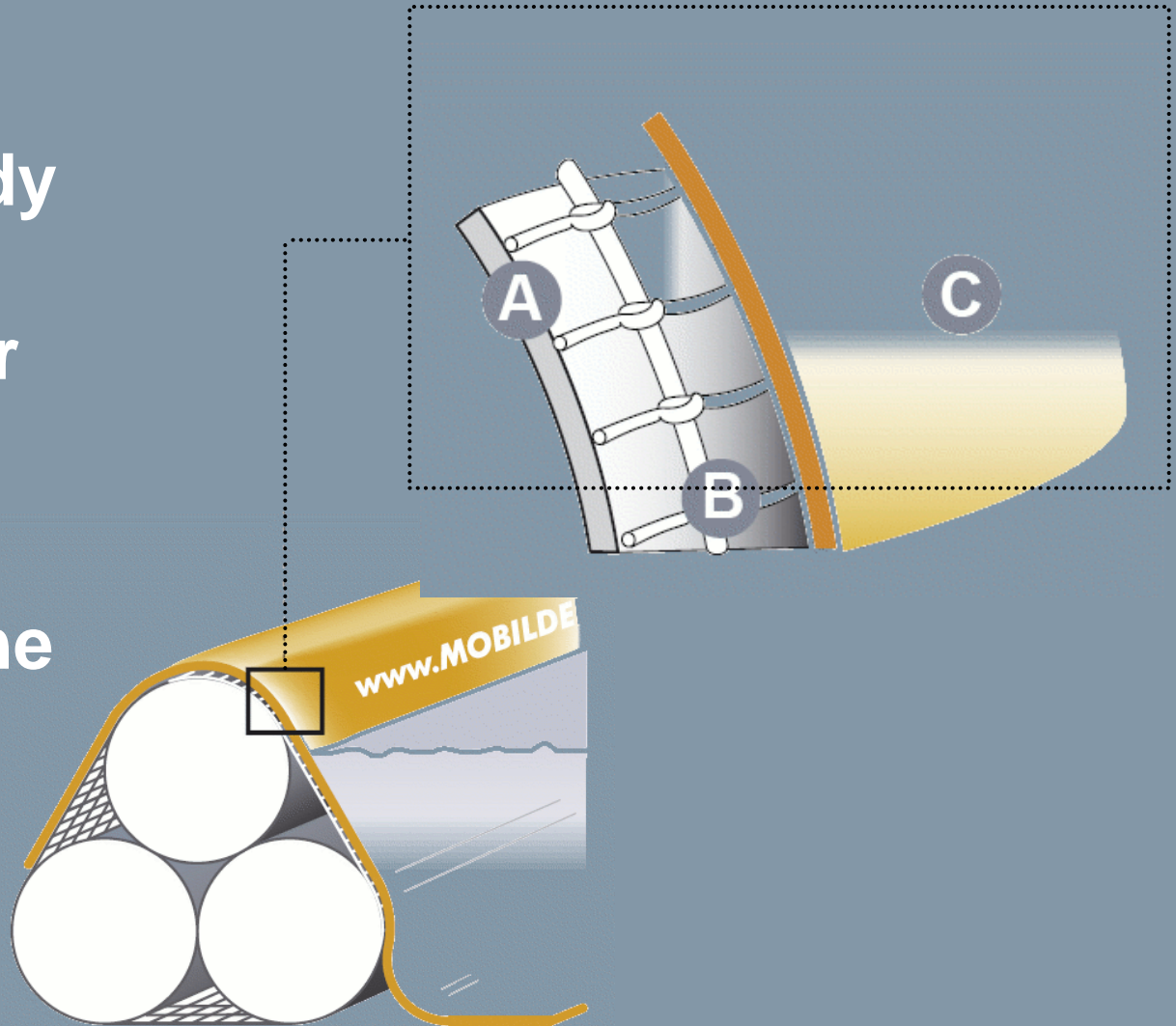
MOBILDEICH

3 components for maximum safety

A – Dyke body

B – Net cover

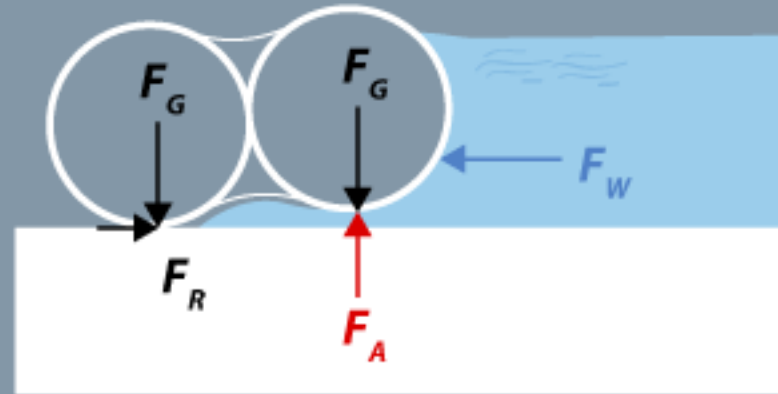
C – Sealing
membrane



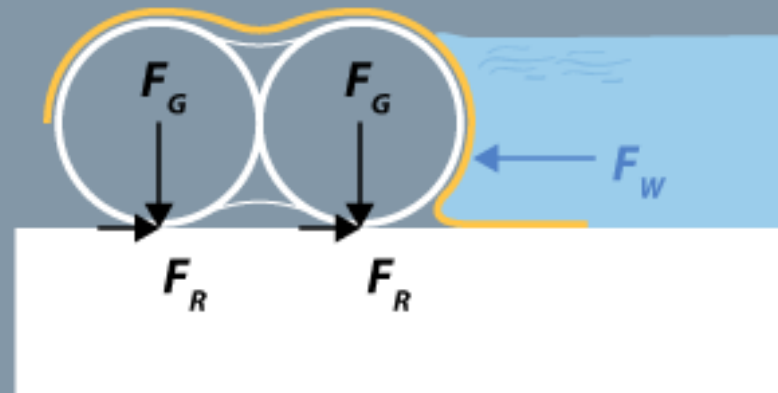


MOBILDEICH

Tube-Systems without sealing membrane start floating from Water-pressure underneath the dyke and fail at 60-80% waterlevel.



The sealing membrane keep water pressure from under the dyke and stop floating. The System is stable until overtopping.





MOBILDEICH

4. Stability Testings at Institut für Klimafolgen- Forschung of TU-Hamburg-Harburg



Logwood impact upward right
Streaming Test left



MOBILDEICH

Logwood-impact with 10 Km/h





MOBILDEICH

MOBILDEICH – Multi purpose

Flooding protection

Construction area drainage

Retention reservoir for

- Fire extinguishing

- Chemical accidents

Fresh water storage for many purpose



MOBILDEICH

Unesco-World-Heritage-Park Dessau-Wörlitz during flooding in June 2013



© by Mobildeich GmbH



MOBILDEICH

Fürstenberg/Havel





MOBILDEICH

Sachsenhausen/Havel



dam of a river, depth 2,0m
construction area under
bridge



MOBILDEICH

Dinslaken Rotbachsee

- Retention Height
- 1,5m
- With Bypass





EON Pipelinetest dam up of River

- Height 1,2m
- Overtopping 30cm





MOBILDEICH

Rijkswaterstrat emergency call Heijen

- MD350-2
- Height 3m
- Waterlevel 2,5m





MOBILDEICH

Rijkswaterstrat emergency call Heijen





MOBILDEICH

Rijkswaterstrat emergency call Heijen

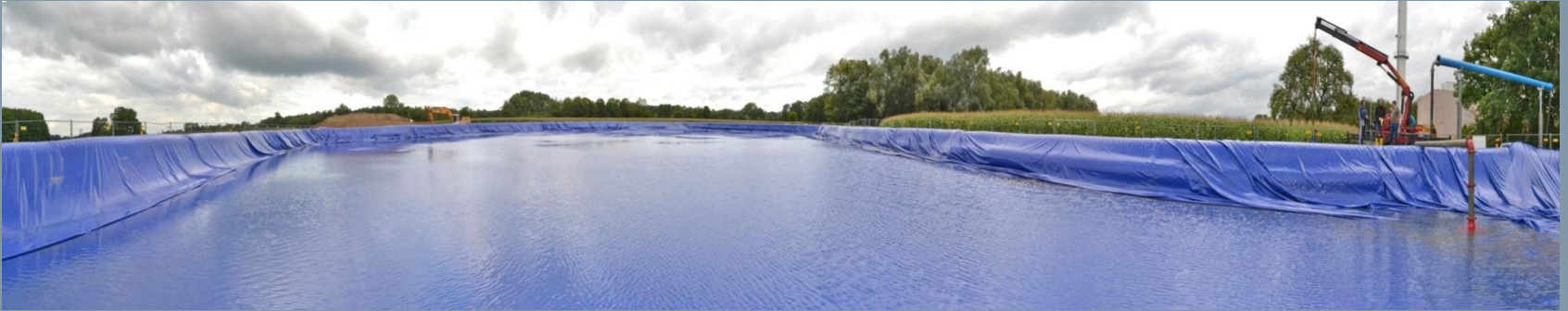
- MD350-2
- Height 3m
- Waterlevel 2,5m





MOBILDEICH

Eon Pipelinetest - Waterstorage 80.000m³





MOBILDEICH

Storage and deploying

1700m Mobiledyke
stored on paletts
using 100m² space
(Dessau-Wörlitz)





MOBILDEICH

**120m MD93-2
on 4m Trailer.
Movable by hand
with uncoiling
wheels.**





MOBILDEICH

60m MD93-2 on
Dykemobil „M“ with
hydraulic motor.
Mounting and
Dismounting with
200m / h.

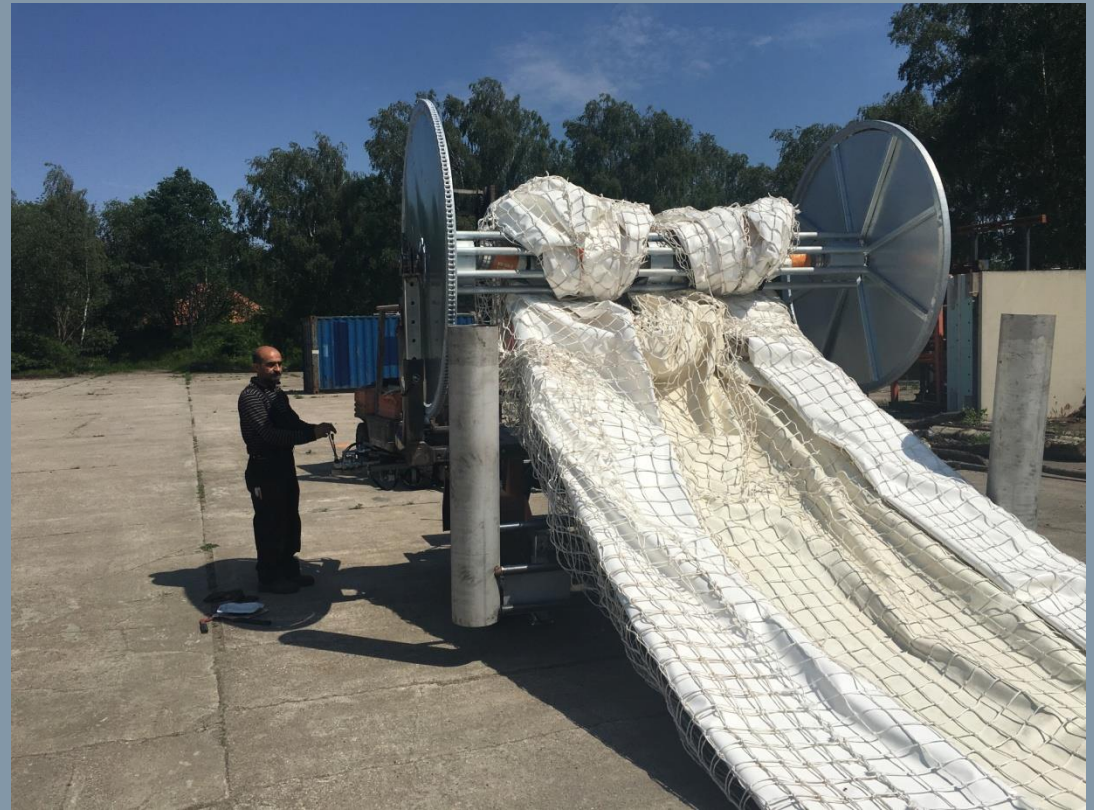


8:46 16/APR/2016



MOBILDEICH

**50m MD150-3 on
Deichmobil „L“. With
changeable drums
and hydraulic motor.
200m /Std.**





MOBILDEICH

Thank you!